



SYNDICO

The Synchronised Distribution Company



# Hytera Body Worn Camera / Remote Video Microphone

Subject to change without notice. E&OE.



[www.syndico.net/body-worn-cameras](http://www.syndico.net/body-worn-cameras)

## Contact Syndico

Tel:	+44 (0) 1489 287 287
Email:	syndico@syndico.net
Web:	www.syndico.net
Twitter	@syndiconet
<hr/>	
Sales Team:	sales@syndico.net
Partner Solutions Team:	orders@syndico.net
Technical Team:	technical@syndico.net
Warehouse Team:	warehouse@syndico.net
<hr/>	
<b>Managing Director</b>	Andrew Wilson
<b>Operations Director</b>	Shona Barnett
<b>Business Development Manager</b>	Gareth Jones
<b>Marketing Manager</b>	Sam Ogles

## About Syndico

Syndico are a specialist, trade-only distributor of communication technology products, and Hytera's authorised UK distribution partner. We specialise in fast, accurate and reliable distribution of Hytera products in order to provide communication technology resellers with a supply chain which sufficiently supports their customers' demands. In recognition of our significant contribution and commitment to growing Hytera's market share in the UK, we were recognised as their "Global Distributor of the Year" in May 2017.

### Registered Address:

Unit 6 Nelson Industrial Park  
Herald Road  
Hedge End  
Southampton, UK  
SO30 2JH

# Body Worn Cameras and Mission-Critical Communications

Communication continues to become more and more vital in allowing organisations to operate efficiently and safely; however, there has been a significant shift towards the importance of deterring crime and collecting evidence. Until recently, the lack of suitable products in the PMR market has left a gap which many end-users have been unable to fill. **Hytera Communications** has presented the perfect solution with their **Remote Video Microphone (RVM)** range.

Hytera RVMs are designed to perform two vital roles: to **capture, store and share vital evidence** in video, image and audio form, and to **integrate seamlessly with Hytera radios** as a remote speaker microphone. They are built to perform effortlessly in the harshest environments; all RVMs conform to MIL-STD-810G standards, are drop-tested to 1.5m and meet IP67 certification. Their 2500mAh batteries will last for up to 7 hours on continuous record, and will run for in excess of 250 hours in standby mode.



# The Key Features

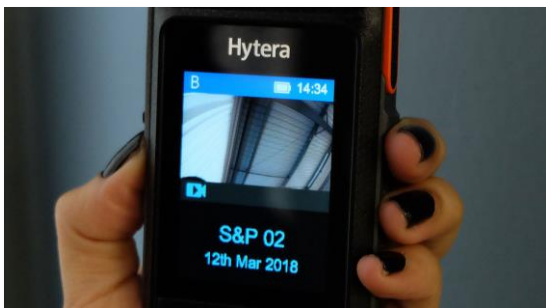


## 1. Remote Speaker Microphone

Use your RVM to communicate as a remote speaker microphone – connect your Hytera radio via Bluetooth or cable, then simply use the PTT button.

## 2. Flexible Garment Mounting Options

Hytera RVMs come with a flexible universal mounting clip as standard, with an industry-standard “Klick Fast” holder also available for compatibility with most security uniforms.

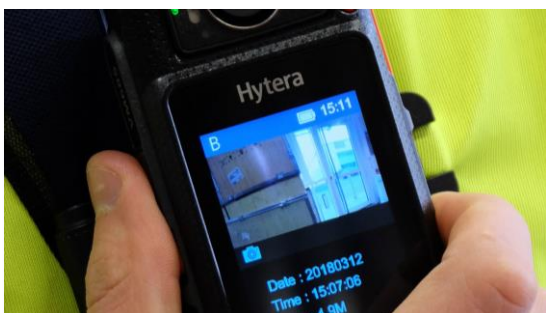


## 3. High Video and Audio Quality

Record footage in 1080P at up to 30 frames/sec (VM550) or 60 frames/sec (VM685), with crystal-clear audio thanks to the RVM’s dual microphone.

## 4. Docking and Data Management

RVMs can be charged, programmed and data-managed using Hytera’s comprehensive software options. Connect either via Micro-USB or using the MCA22 multi-charger.

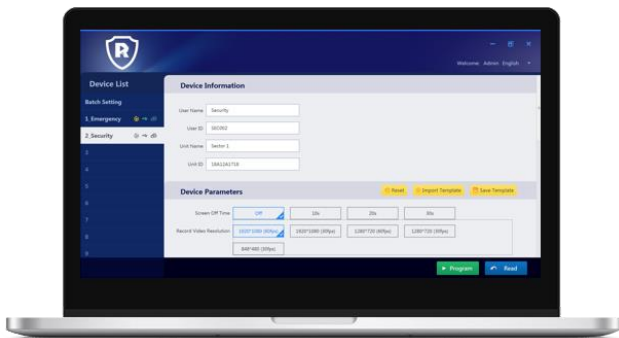


## 5. Ergonomics and Simple Use

One-touch record and emergency buttons enable fast and simple use in any situation. Pre-and post-record can be set up to ensure there is no risk of missing vital evidence.

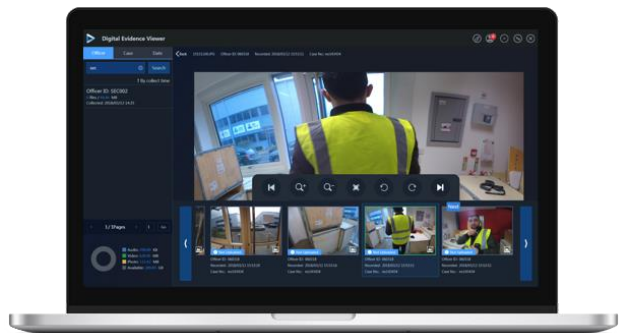
# Digital Evidence Management

Managing evidence collected in the field is fundamental, not only for ensuring a complete safeguarding process for individuals and organisations, but also complying with data protection regulations. Hytera has three levels of software, providing an evidence management solution for every user:



## RVM Manager

Ideal for small user groups, the RVM manager is a simple “plug and play” software with all the security measures you would expect. With two user authentication levels, ensure only those with access are allowed to make changes on RVM devices and extract media via your PC’s disk drive.



## SmartMDM IDS (Integrated Device Station)

Designed with medium-sized user groups in mind, with SmartMDM multiple devices can be docked and their data removed simultaneously via the MCA22 multi-charger. Once the device is docked, evidence is automatically removed from the device ready for to be viewed, tagged and saved.



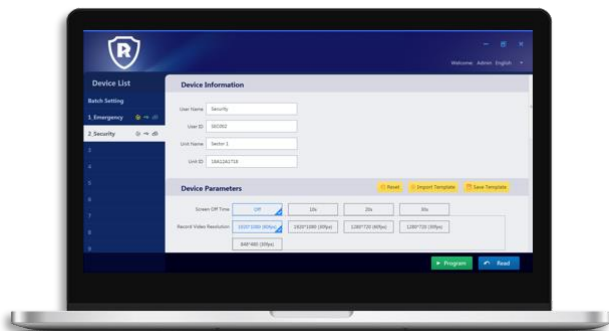
## Digital Evidence Management (DEM)

With Hytera’s DEM software, multiple sites can be managed from a central location. Data captured from any fleet of RVMs can be managed via DEM and integrated directly with existing IT infrastructure. Up to 50 SmartMDM IDS’s can be supported from one DEM centre.

# Evidence Management Setup

## via RVM Manager

Simple plug-and-play; manually navigate to devices' media via your PC's disk drive; program your RVM.



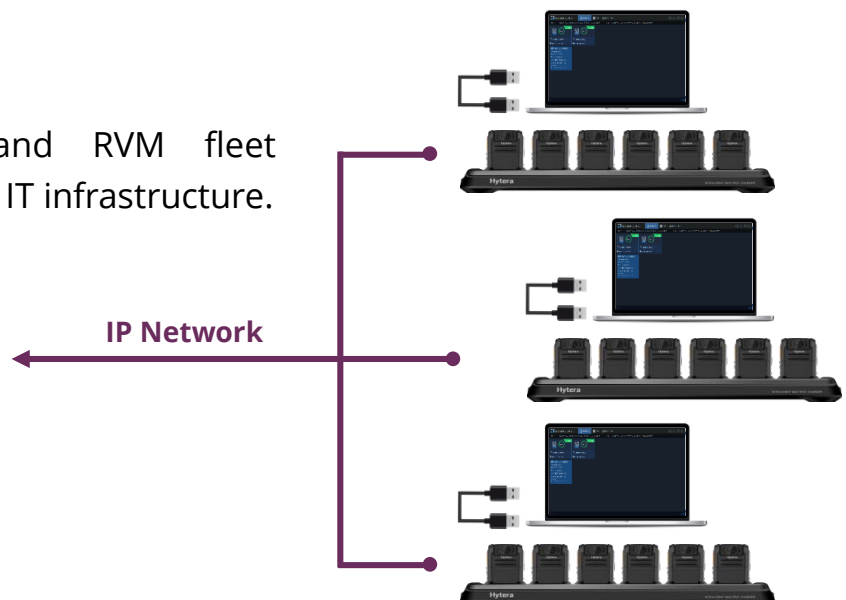
## via SmartMDM IDS

Dock multiple devices simultaneously; sync evidence automatically; analysed, tag, store and organise evidence.



## via DEM Server

Centralise your data capture and RVM fleet management; integrate with existing IT infrastructure.



# Body-Worn Cameras (RVMs)

## Key Features

- Records at 720P (up to 60 frames/sec) and 1080P (up to 30 frames/sec)
- Bluetooth 4.0 and Wi-Fi connectivity
- 2 watt speaker
- 2500mAh battery capacity, 7 hours continuous use
- $\geq$  250 hours standby time
- Charge time:  $\leq$  4 hours
- Pre-and post-record function (20 or 30 secs)
- 0.9 inch OLED status screen (top of unit)
- Fixed-focus lens, 139° diagonal, 116° horizontal and 60° vertical field of view
- H.264 video encoding technology
- .mp4 video format
- Micro-USB charge and data connection
- Weighs 145g (including battery)
- Dimensions: 86.5 x 58 x 25.7mm (H x W x D)
- MIL-STD-810G and IP67 compliance
- 1.5m drop tested
- Operating temperature: -20°C - +60°C

**RVM**

**VM550**



## Standard Package

- Camera
- 2500mAh battery
- USB Cable
- Charger
- Clip (rotatable)
- Instructions

Model	Description
VM550-16	VM550 body-worn camera – 16GB memory
VM550-32	VM550 body-worn camera – 32GB memory
VM550-64	VM550 body-worn camera – 64GB memory
VM550-128	VM550 body-worn camera – 128GB memory



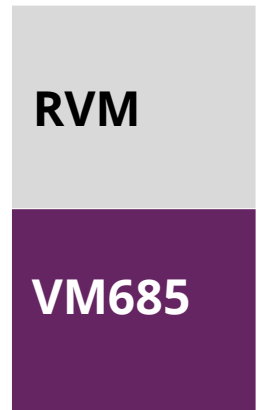
## Key Features

- Records at 720P and 1080P (up to 60 frames/sec)
- 16 megapixel image sensor
- Bluetooth 4.0 and Wi-Fi connectivity
- 2 watt speaker
- 2500mAh battery capacity,  $\geq 8$  hours continuous use
- Charge time:  $\leq 4$  hours
- $\geq 250$  hours standby time
- Pre-and post-record function (20 or 30 secs)
- 2.4 inch LCD display
- 180° rotatable lens; 140° diagonal, 106° horizontal and 78° vertical field of view
- H.264 video encoding technology
- .mp4 video format
- Micro-USB charge and data connection
- Weighs 145g (including battery)
- Dimensions: 86.5 x 58 x 25.7mm (H x W x D)
- MIL-STD-810G and IP67 compliance
- 1.5m drop tested
- Operating temperature: -20°C - +60°C

## Standard Package

- Camera
- 2500mAh battery
- USB Cable
- Charger
- Clip (rotatable)
- Instructions

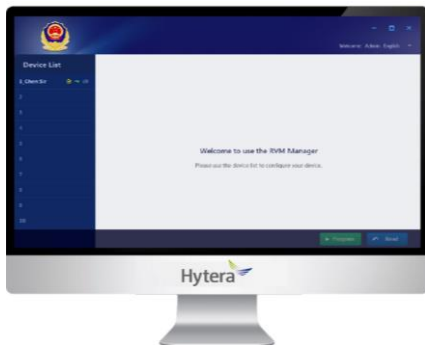
Model	Description
VM685-16	VM685 body-worn camera – 16GB memory
VM685-32	VM685 body-worn camera – 32GB memory
VM685-64	VM685 body-worn camera – 64GB memory
VM685-128	VM685 body-worn camera – 128GB memory



# Software

## BWC Manager – Suitable for 10 users or less

- Free of charge software
- RVM setup and programming
- Simple password-protected software with two-level security authentication
- Manually upload media captured (via disk drive) and clear existing media from RVM
- Charge via Micro USB (included) or via MCA22 multi-charger (optional)



**RVM  
Software**

**RVM &  
MDM**

Item Code	Description
BWC Manager	Hytera BWC Manager software

## SmartMDM– Suitable for 10-100 users

- Utilise the SmartMDM software with the MCA22 multi-charger for batch uploading
- Programme multiple devices via the multi-charger using the RVM Manager software
- Tag, search and view evidence using the software’s digital evidence viewer – password protected to comply with data protection regulations
- Save captured data within the application or connect to a server for data sharing

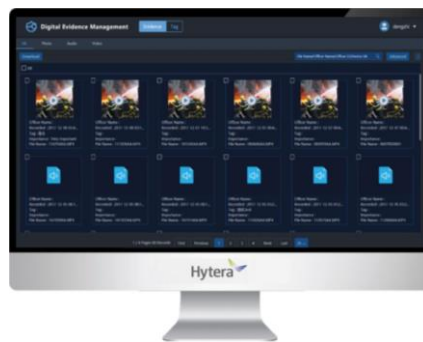


Item Code	Description
13089900000024	Hytera SmartMDM IDS (Integrated Device Station) software
54010310000189	Smart USB licence dongle (required for SmartMDM)

## Digital Evidence Management (DEM) – Suitable for multiple locations, 100+ users

DEM collects and stores digital evidence recorded on RVMs on public security networks. You can analyse and tag evidence, assigning key-words for retrospective search. For data security, you can assign different permissions to different users.

- Capable of processing large amounts of data
- Redundancy backup and load balancing mechanism for reliability
- Cloud server for centralised storage and control
- Automatic data upload
- Role-based access control and user authentication for security



**RVM  
Software**

**DES**

Item Code	Description
SW00120	DEM basic package x1, supports up to 50 x IDS, includes USB dongle
SW00121	Additional server backup and USB dongle

# Accessories

Model	Image	Description
BC38		VM550 belt clip
BC35		VM685 belt clip
RSTUD-HYTBC35-COM		VM685 holder with integrated Klick Fast connector
BP2501		Li-poly battery (2500mAh)
PS1084		Switching power adapter (UK/EU)
MCA22		Six-way multi-charger and data extraction station
EHU02		Micro-USB earpiece
PC105		PDC760/PTC760 radio connection cable
PC106		PD7/PD9/PT580H radio connection cable
PC107		PD6/X1 radio connection cable

RVM

Accessories



# SYNDICO

The Synchronised Distribution Company

**Registered Address:**

Unit 6 Nelson Industrial Park, Herald Road, Hedge End, Southampton, SO30 2JH

